

A typical weekend for a Twenty - 1996

I set off from Bromley in SE London at 8am on Saturday morning 27 July, drove round the South Circular and down the M4, stopping at Reading Services to check oil & water & waterpump grease. I arrived at our guest house at Fishponds Bristol at 11.30. At the due time I collected the bride, her father & maids



and drove to the registry office.



I then took bride & groom (son of a friend & neighbour) to the reception. On the Sunday I took part in the Bath to Bournemouth Classic Car Run, which had professional photos



taken at Tarrant Monkton Ford & a thatched cottage,

and called at a pub The Langton Arms. I had arranged to meet up with John Bircumshaw, who



had bought GUY27 in 1961 for £125 with his 21st birthday money. He drove his university friends round N Wales and sold it with a knocking engine in 1963. He had contacted me via the Classic Car Weekly after he saw my centre spread headed "Magnificent Magdalena" and then lived locally in Southbourne. We met at Kingston Lacy House near Wimbourne for a chat & photos. He had told the editor of CCW

that he had some things belonging to my car that he wanted to give me.



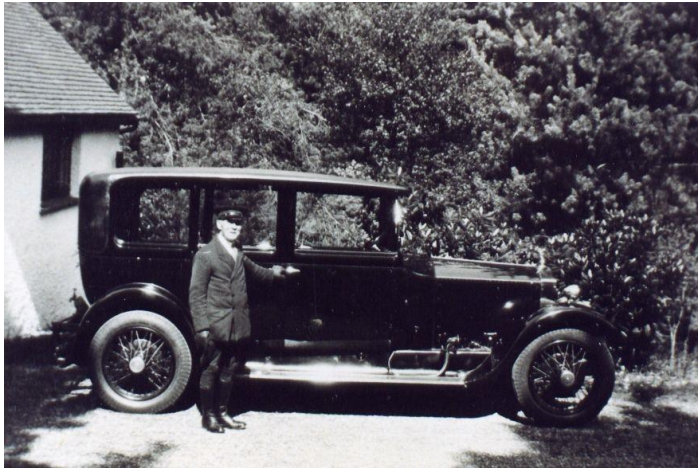
I have contacted him several times, despite each time having to find out where he had moved to (Wrexham, Burbage near Hinkley, Colwyn Bay!) but have never met him since nor found out what he was talking about 20 years ago. I have sent him photos via Facebook. I completed the run to the front at Bournemouth where the public could inspect the cars. I had arranged to meet my wife's uncle & aunt there and went back to their



house at Poole for the night.



On the Monday I went to see *The Maples* at Broadstone (near Bournemouth) where GUY27 lived from 1927-36, but was saddened to find that only the trees had survived,



the house having been demolished 7 years previously & the garden covered with new yuppie flats, the same fate to befall the other big houses in the road. I spent a couple of hours in Salisbury with an old retired work mate from the 60's, Liz



and averaged 30mph home to SE London via the "pretty route" keeping just south of a big storm heading for London.

420 miles in the busy 3 days.

Royces are for driving!